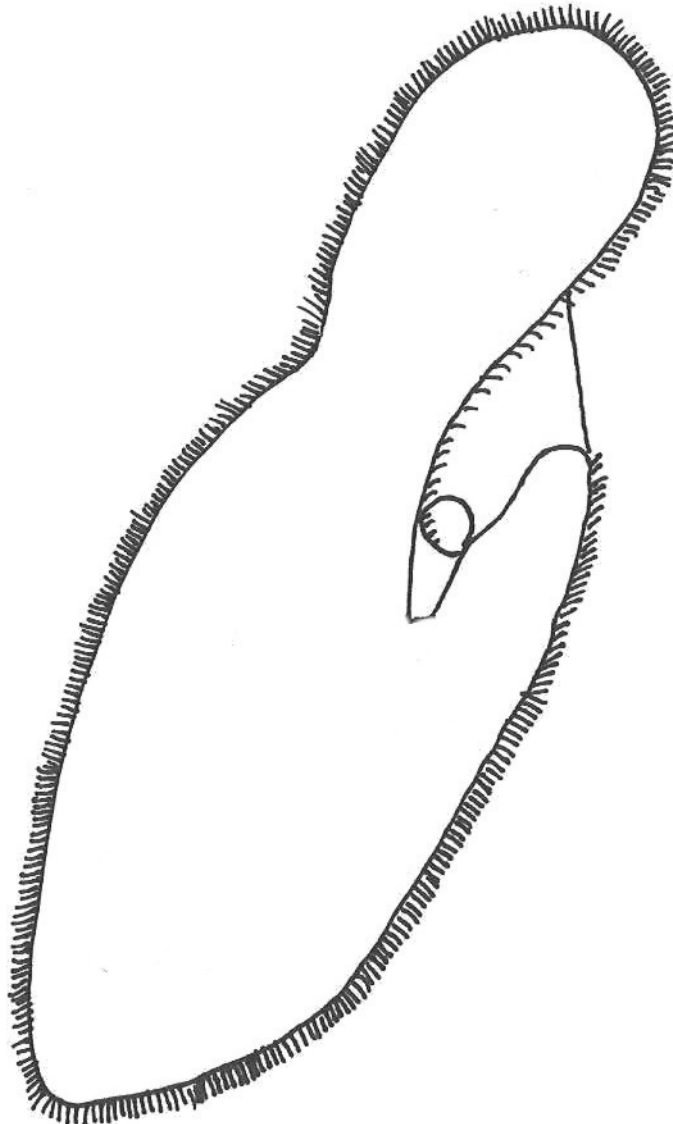


8. Using a pair of scissors cut out the paramecium's body parts on page 119

- Using glue or transparent tape, place them in their appropriate place on the Paramecium Template
- Label them using the following labels: Macronucleus, micronucleus, food vacuole, contractile vacuole and cilia.

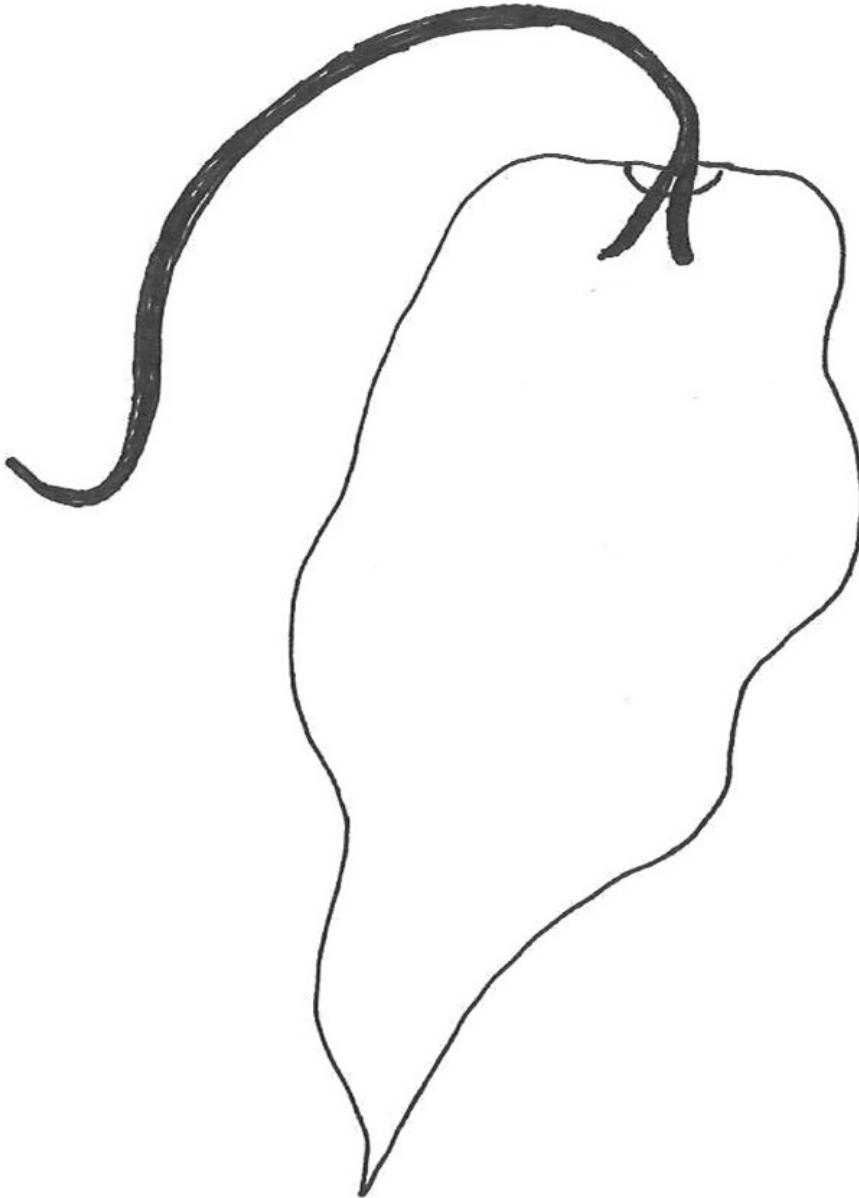
**Paramecium Template.**



9. Using a pair of scissors cut out the Euglena's body parts on page 119

- Using glue or transparent tape, place them in their appropriate place on the Euglena Template
- Label them using the following labels: Nucleus, chloroplast, food vacuole, and flagellum.

Euglena Template.



Print Name \_\_\_\_\_ Period \_\_\_\_\_ Date \_\_\_\_\_

**Analysis:**

10. In examining the two templates, what traits seem to differentiate one species from another?

---

---

---

---

11. In examining the two templates, what traits do both organisms have in common?

---

---

---

---

12. Do the template pictures resemble the prepared slides?

---

---

13. What cell parts are not visible on the prepared slides that were seen on the templates?

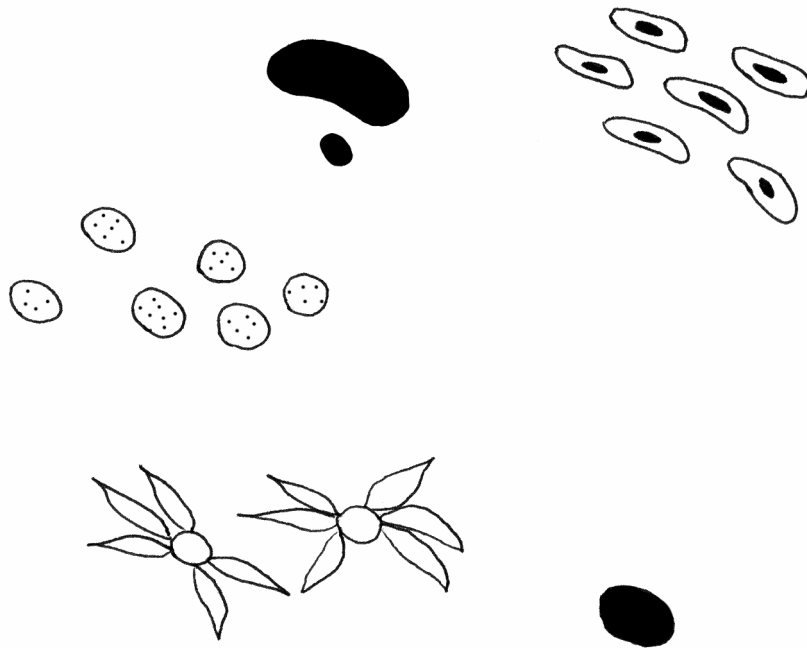
---

---

Print Name \_\_\_\_\_ Period \_\_\_\_\_ Date \_\_\_\_\_

This page intentionally left blank

**Paramecium Parts (cut these out and paste on page 115)**



**Euglena Parts (cut these out and paste on page 116)**

