

1:3 Elements of Art & Principles of Design

ELEMENTS OF ART

Through the principles of design, the Elements of Art (color, line, texture, shape / form, & value) arranged in a way to enhance and art work's impact on an audience.

The Elements of Art are:

- Color
- Line
- Texture
- Value (light and dark)
- Shape (2D) and Form (3D)

For more information including color schemes, visit:
http://www.sanford-artedventures.com/study/g_art_elements.html

1:3a Elements of Art & Principles of Design

PRINCIPLES OF DESIGN

Essentially, a work of art is held together through the effective use of the principles of design.

Formal Balance:

Symmetry

Where the image's illusion of balance appears to be equal on both the left and right sides.



Figure 1: Rebecca McLellan

Informal Balance:

Asymmetry

Where the image appears to be weighed heavier on one side yet the image still appears to have an illusion of balance.



Figure 2 Rachel Robinson

1:3b Elements of Art & Principles of Design

PRINCIPLES OF DESIGN

Essentially, a work of art is held together through the effective use of the principles of design.

Emphasis

Emphasis occurs when elements of art are used to draw an audience's attention to a key subject in an artwork.

Here, the red flowing vertical line stands out against the blue and orange horizontal straight lines.



Figure 3 Caitlin Rose

1:3c Elements of Art & Principles of Design

PRINCIPLES OF DESIGN

Essentially, a work of art is held together through the effective use of the principles of design.

Repetition or Rhythm

When visual elements repeat themselves, establishing rhythm. The forms can be duplicates, near duplicates, or have some sense of variety.

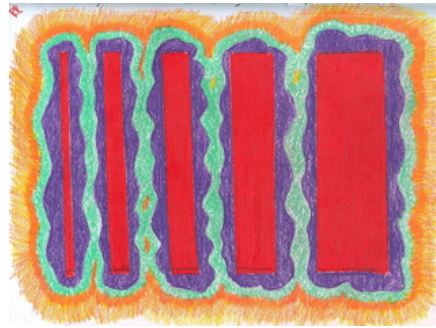


Figure 4 By Rachel Robinson

Proportion

Proportion is used to establish a relationship of scale between visual elements.



Figure 5 By Robyn Stewart

1:3d Elements of Art & Principles of Design

PRINCIPLES OF DESIGN

Essentially, a work of art is held together through the effective use of the principles of design.

Variation

Variation occurs when elements of art vary within the artwork. An image may contain a range of sizes, colors, textures (etc). This is done to jazz up a work -- evading monotony.

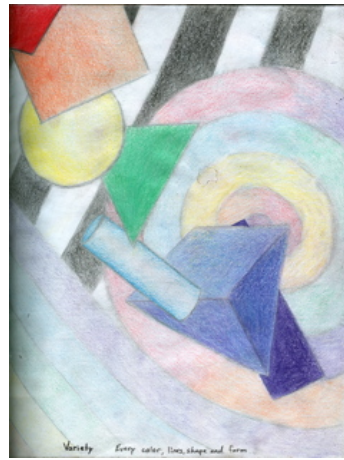


Figure 6 By Kate Legge

Grid or Patterning

A Grid composition exists when the artwork appears to be flattened and covered with a repeated form. The image usually appears to be equitably balanced throughout the picture plane.



Figure 7 by Kate Legge