

## 1.6a Coil Pot



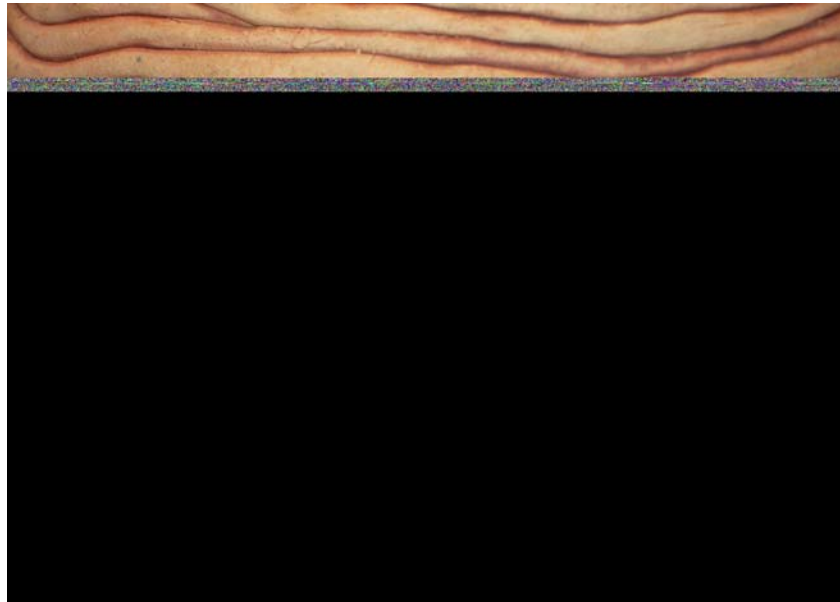
### **Method:**

1. Use a rolling pin or the palm of the hand to flatten a slab of clay for a base.
2. Roll a rope-like piece of clay to the desired thickness, using the palm of the hand to create coils.
3. Lay coils, one at a time, around the base and continue coiling them on top of each other.

## 1.6b Coil Pot

4. Smooth the inside of the pot as coils are built and joined.
5. The coil design on the outside of the pot does not need to be covered, as long as the inside of the pot is smooth.
6. Experiment with coil designs on the outside of the pot.
7. Allow bottom portion of pot to dry slightly to add strength to the pot as it is growing taller.
8. Keep the top edge damp for addition of coils.
9. Cover piece with a plastic bag overnight.
10. Resume work on top edge by adding coils. If the top edge has dried slightly, score it and add slip before the next coil.
11. Avoid rapid drying as the clay will crack. Write name or initials on the bottom of the pot for identification.

## 1.6c Coil Pot



**Coil Designs**

## Example



**Slab Form by Emily**

## 1.6d Coil Pot

### Example



**Slab Form by Erin**

### Slab Construction 1.13a

#### Method:

1. Roll clay with a rolling pin, pound with the heel of the hand, or run clay through a slab roller to make slabs.
2. Allow the pieces to dry to a leather-hard state before assembly starts.
3. Score all sides and corners that will be joined with a pottery needle, old toothbrush or other pottery tool.

## 1.6e Coil Pot

4. Cover all scored areas with slip.
5. Build the slab construction by sticking the scored edges together. Use extra clay to run up and down the seams of the joined areas. Do this in such a way, smoothing as the clay is added, that the resulting join is invisible.
6. Additional pieces of clay (thrown or coiled spouts, handles, etc.) can be added to the construction by scoring first, adding slip, and joining.
7. Surface texture and decoration may be added, or the construction may be left plain.

\*If making a clay box, the methods of building are the same. Six slabs will need to be made (four sides, top and bottom). Each side will be decorated by using clay coils or carving. The coiled area should be added with the score and slip method.

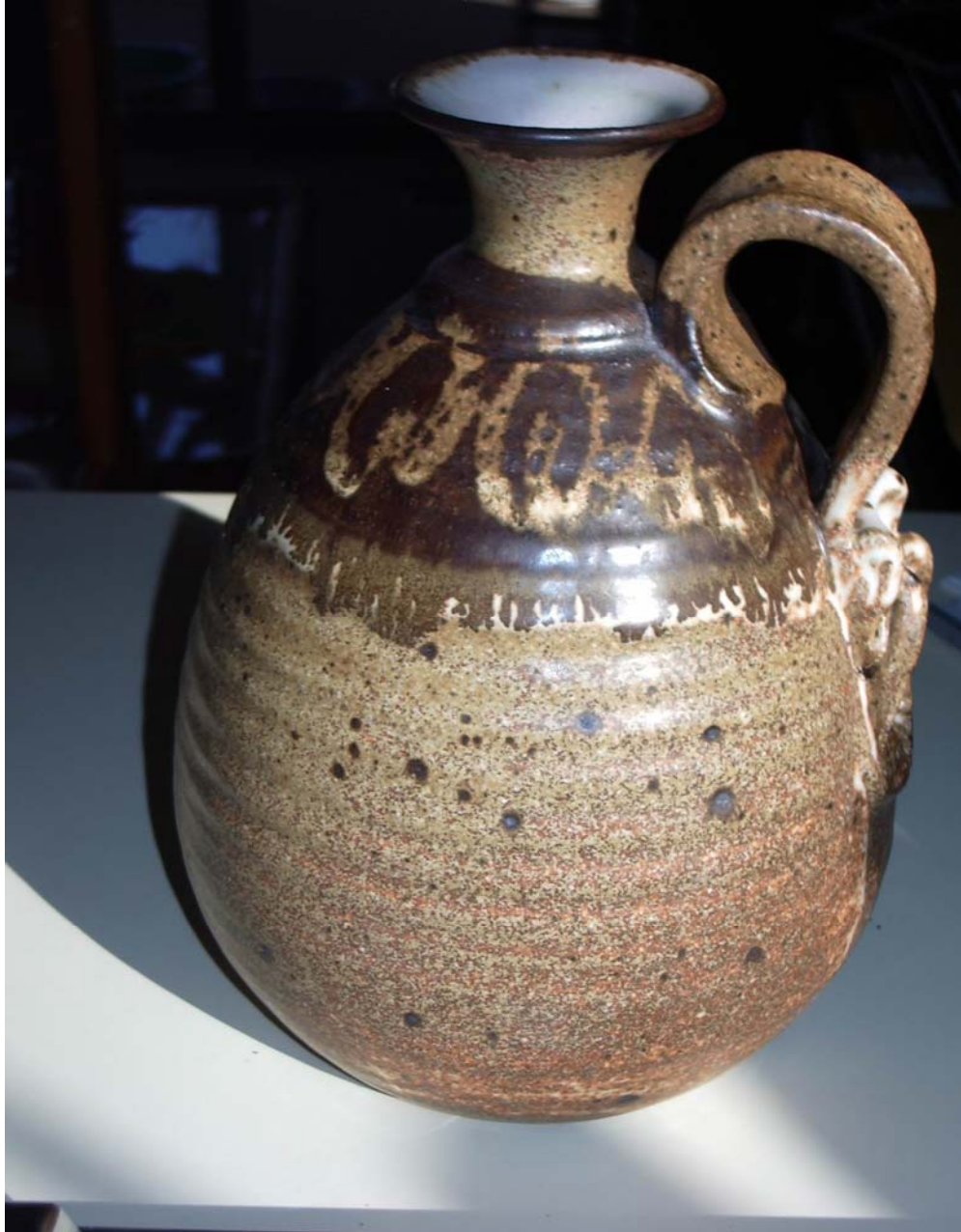


## 1.6f Coil Pot



## Slab Form

## 1.6g Coil Pot



**Thrown Jug      Stoneware Clay**